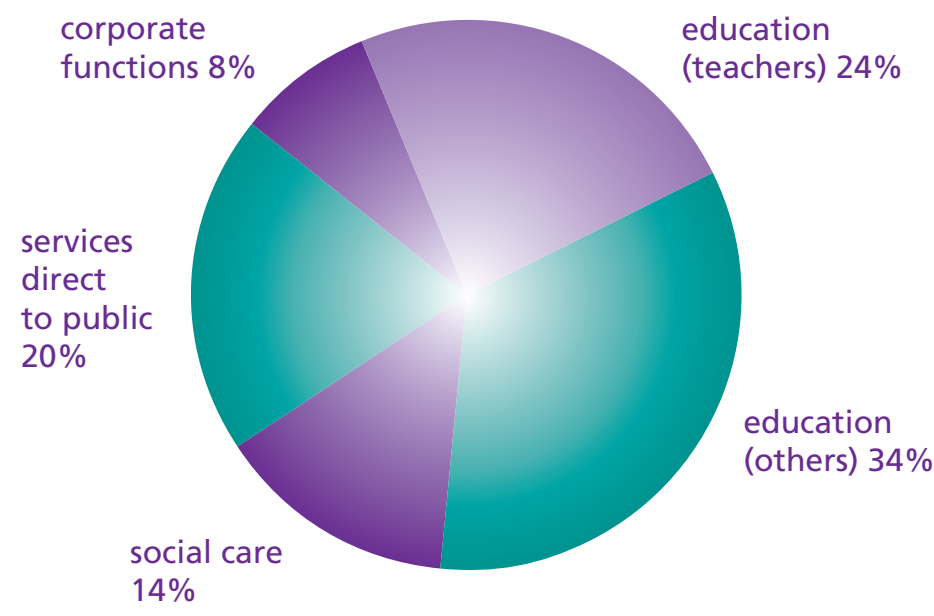
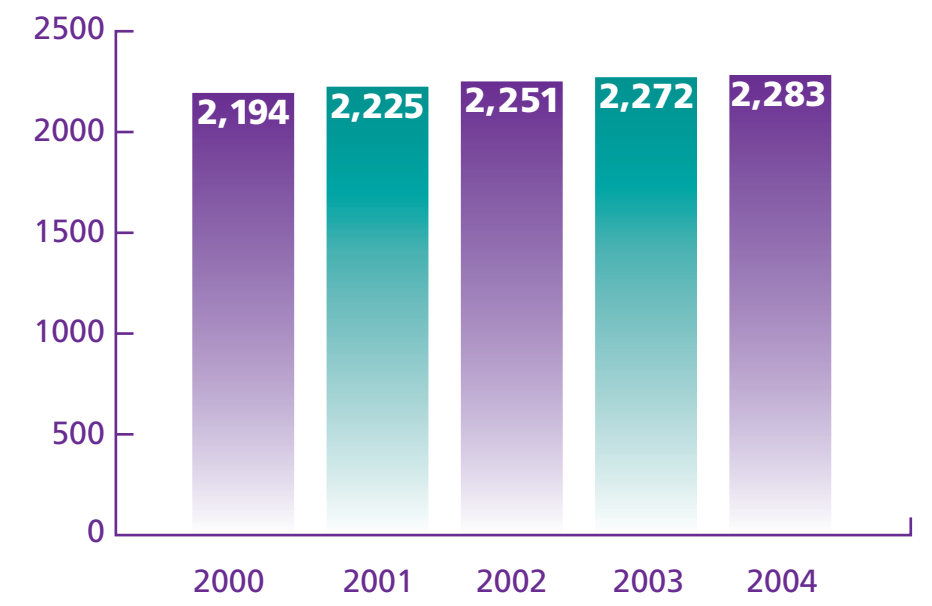


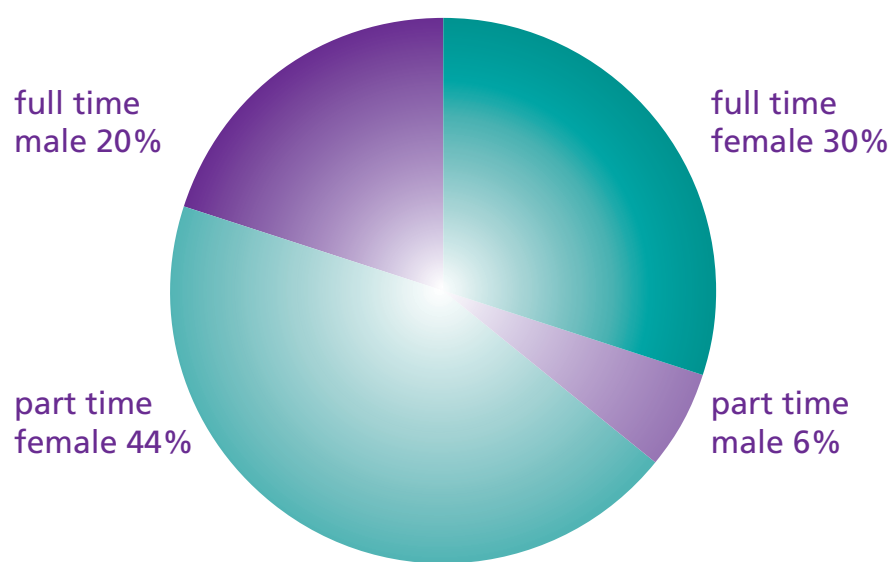
whole economy workforce – UK 28.5 million (i)



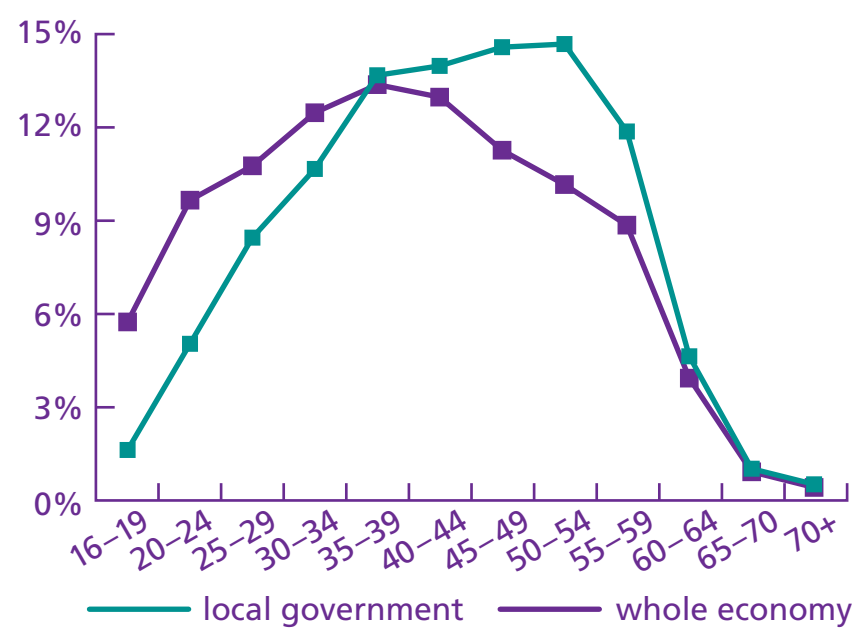
local government workforce by service England and Wales 2.3m million (ii)



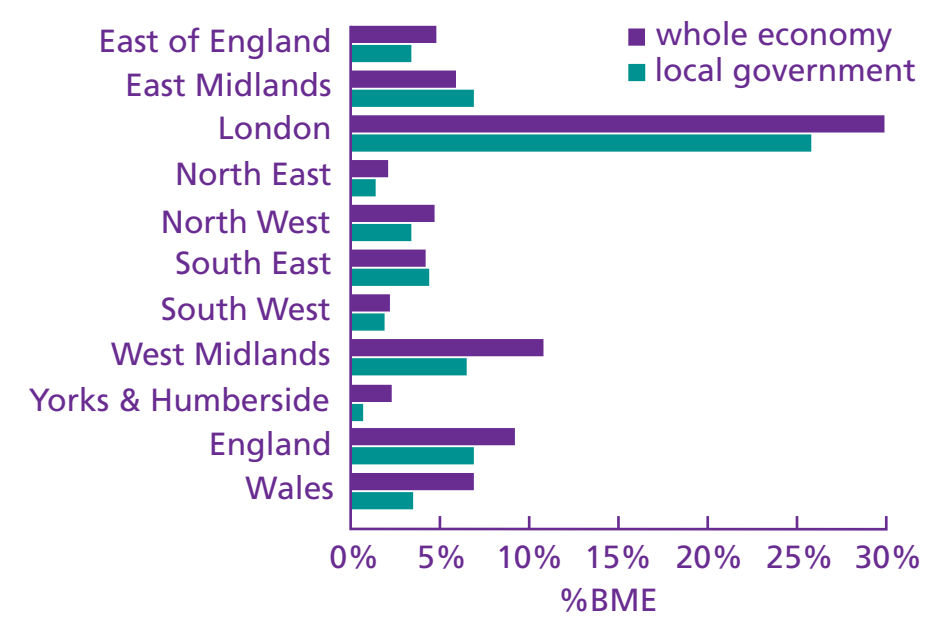
local government workforce 2000 – 2004 England and Wales (000s) (iii)



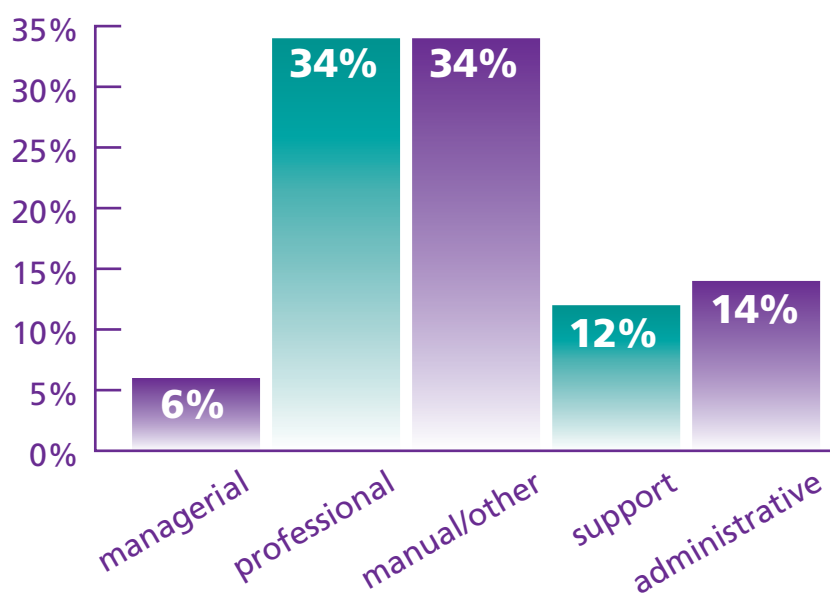
full time and part time breakdown by gender (iv)



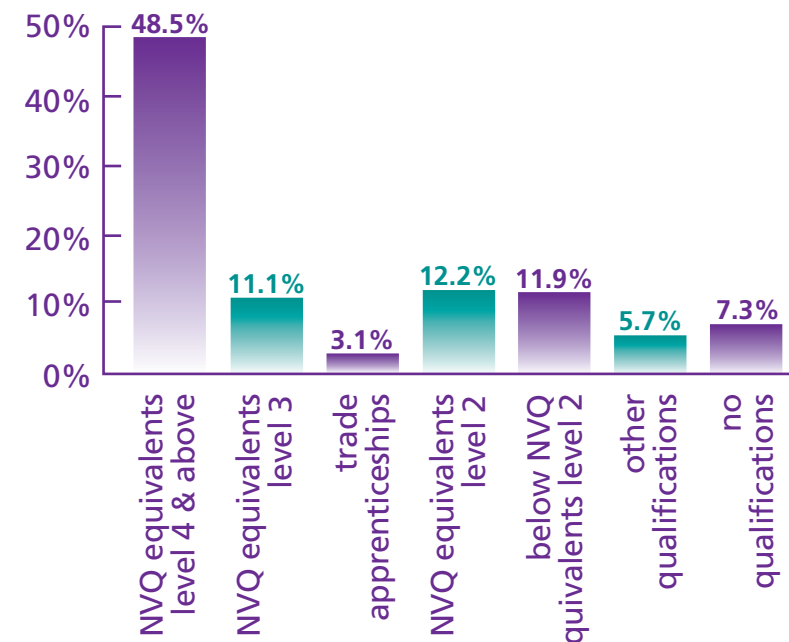
workforce age distribution (v)



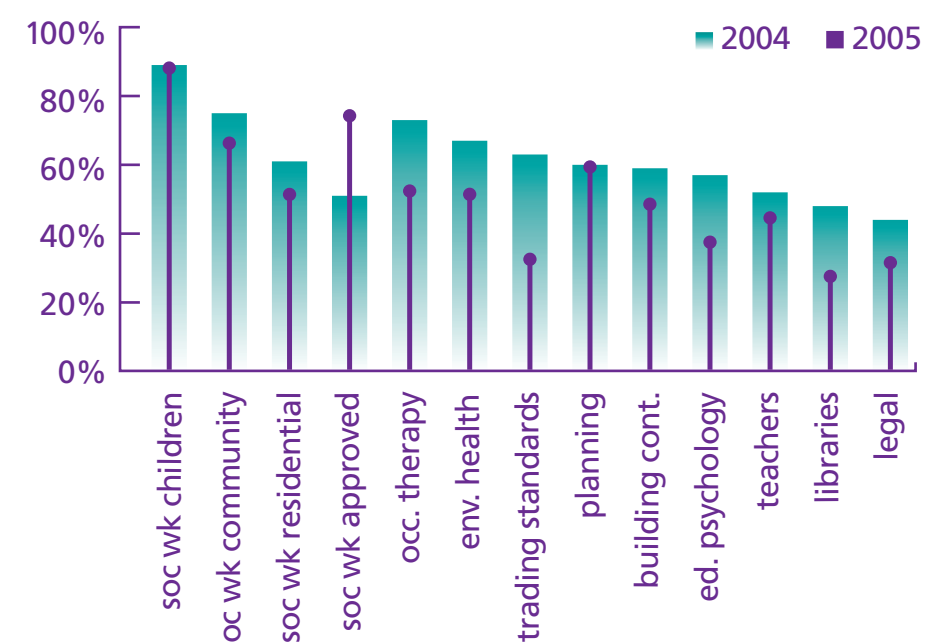
workforce ethnicity regional breakdown (vi)



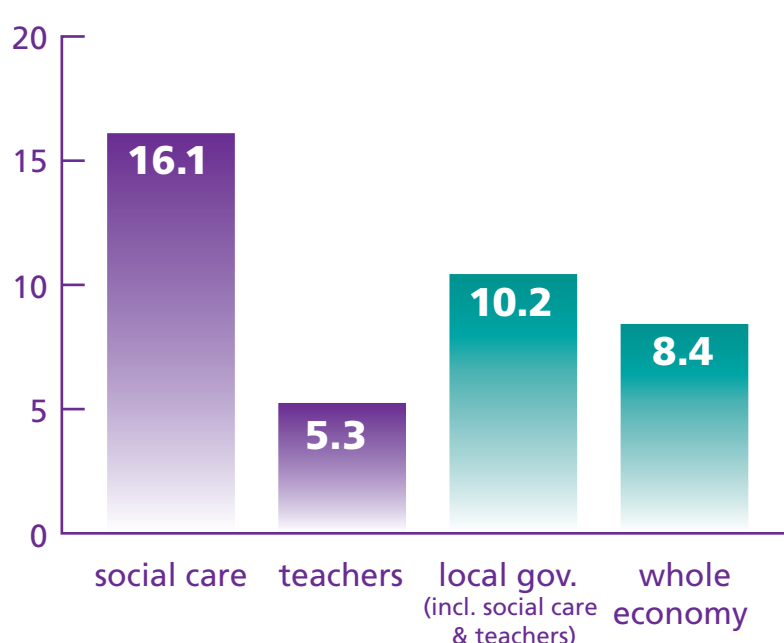
workforce role (vii)



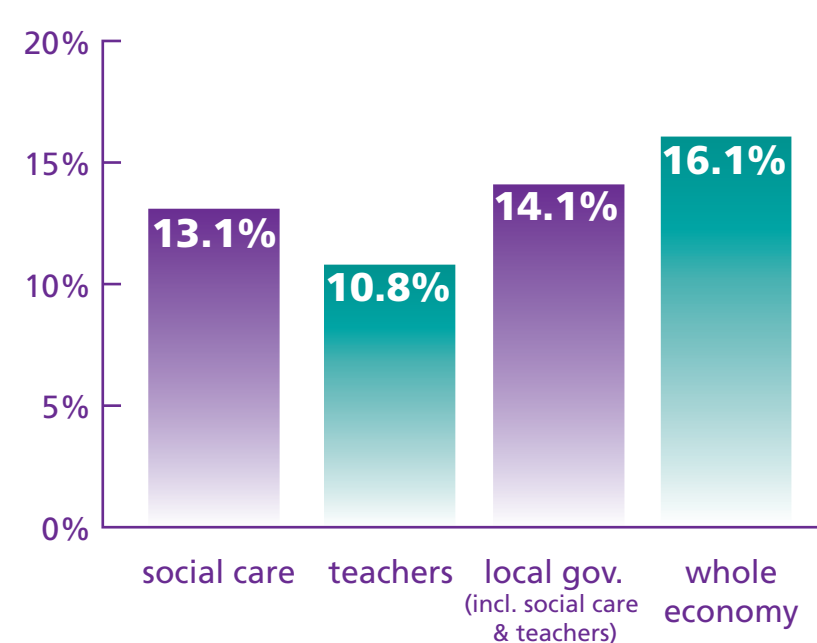
workforce highest gained qualifications (viii)



% authorities reporting recruitment difficulties top 10 workforces (ix)



median days sickness per employee (x)



total labour turnover (xi)



training expenditure per employee (xii)

the local government workforce England and Wales 2005

key facts for the local government workforce in 409 local authorities across England & Wales from the latest surveys, illustrating its scale and diversity and some of the key issues it faces as 2.3 million workers provide essential services to the community.

contact 020 7296 6600 for more information or visit www.lg-employers.gov.uk

Footnotes (N.B. employee numbers are based on headcount unless otherwise specified; data relates to 2004 and England and Wales only and covers the whole local government workforce excluding police unless otherwise specified below): (i) Office for National Statistics (ONS) Labour Force Survey (LFS), Spring 2005, All UK. (ii) EO Local Government Employment Survey. (iii) EO Local Government Employment Survey 2000 – 2004. (Excludes firefighters and other employees of fire authorities.) (iv) EO Local Government Employment Survey. (v) ONS LFS. England only. (Excludes fire and police). (vi) ONS LFS. (Excludes fire and Police. Figures for Wales are from LFS and include fire but exclude police. Whole economy figures are from ONS LFS, Summer 2002). (vii) ONS LFS. All Local Government Services occupations (excluding Craft) have been represented in the chart. (viii) ONS LFS. (Figures are for England only) (ix) EO Recruitment & Retention Surveys 2004 and provisional 2005 figures. (x) DfES Teacher in Service and Teacher Vacancy Survey, 2005; EO Social Services Sickness Absence Survey 2002; CIPD Absence Management Survey 2005. ODPM Best Value Performance Indicator 2003-4 (England only, including Teachers and Social Care). (xi) EO Social Care Workforce Survey; EO Teacher's Recruitment and Retention Survey 2003 (figures apply to all teachers in LEA schools); EO People Skills Scoreboard; CIPD Recruitment, Retention and Turnover Survey (figures apply to the whole of the UK). (xii) EO People Skills Scoreboard.