

OXFORDSHIRE PARTNERSHIP LOCAL AREA AGREEMENT: 2008-11

OVERVIEW

TARGET DETAILS

ANNEX A: Oxfordshire Partnership (OP) – Membership Organisations.

ANNEX B: Other organisations working to deliver LAA Targets

ANNEX C: Arrangements for specific targets agreed during negotiations

ANNEX D: Structure of Oxfordshire Partnership and thematic Partnerships

ANNEX E: Summary of 2010-11 targets agreed – March 2009 for Reward Model

OVERVIEW

The indicators chosen for the Local Area Agreement (LAA) are directly related to the priorities identified in the Sustainable Community Strategy, which has been developed by the Oxfordshire Partnership following extensive community engagement. Responsibility for delivery of the LAA is delegated by Oxfordshire Partnership to the Public Service Board (see annex A). The Oxfordshire Partnership, then Public Service Board and the various related thematic partnerships are committed to these priorities and the 'duty to cooperate' applies to members of the Oxfordshire Partnership, the Public Service Board and the thematic partnerships (see Annex D).

Three indicators (marked with '££' in the table) are affected by the economic downturn. The need to renegotiate these targets has been agreed with GOSE but has been deferred until later in 2009/10 when more realistic target setting will be possible.

A number of indicators (marked with '&' in the table) have had specific arrangements built into the negotiated baselines and targets; details of these are included as Annex C.

TARGET DETAILS

Indicator	Baseline Year	Baseline	Indicator is measured as:	2008 / 2009	2009 / 2010	2010 / 2011	Lead
* NI 56 Obesity among primary school age children in Year 6 DCSF DSO	Ac year 2006/07	15.3%	%	15.4%	15.3%	15.2%	Oxfordshire Children's Trust
* NI 62 Stability of placements of looked after children: number of moves DCSF DSO	2007/08	13.9%	%	12.5%	11.7%	11.0%	Oxfordshire Children's Trust
* NI 70 Hospital admissions caused by unintentional and deliberate injuries to children and young people DCSF DSO	2007/08	107 per 10K of the population	Rate per 10K	86 per 10K of the population	106 per 10K of the population	104 per 10K of the population	Oxfordshire Children's Trust

Indicator	Baseline Year	Baseline	Indicator is measured as:	2008 / 2009		2009 / 2010		2010 / 2011		Lead
* NI 81 Inequality gap in the achievement of a Level 3 qualification by the age of 19 DCSF DSO	2005/06 Academic year	A difference of 34 percentage points. (The gap nationally is currently 26.)	%	A difference of 30 percentage points	A difference of 29 percentage points	A difference of 28 percentage points				Oxfordshire Children's Trust
* NI 110 Young people's participation in positive activities PSA 14	Tell Us 3 survey summer 2008	71.70%	% respondents	Baseline year 71.70%	78.50%	85%				Oxfordshire Children's Trust
* NI 111 First time entrants to the Youth Justice System aged 10 – 17 PSA 14	2007/08 financial year	1420 (rate per 100,000 population aged 10-17)	No.	1390	1360	1330				Oxfordshire Children's Trust
* NI 112 Under 18 conception rate PSA 14	2006 Calendar yr	13% reduction on level of teenage pregnancy since 1998 (Equivalent to 27.4 per thousand)	%	Estimated equivalent to 22.3 per thousand (2008 calendar yr)	29% reduction in the level of teenage pregnancy since 1998. (2008 calendar yr)	Estimated equivalent to 19.8 per thousand (2009 calendar yr)	37% reduction in the level of teenage pregnancy since 1998. (2009 calendar yr)	Estimated equivalent to 17.3 per thousand (2010 calendar yr)	45% reduction in the level of teenage pregnancy since 1998. (2010 calendar yr)	Oxfordshire Children's Trust

Indicator	Baseline Year	Baseline	Indicator is measured as:	2008 / 2009		2009 / 2010		2010 / 2011		Lead
* NI 117 16 to 18 year olds who are not in education, training or employment (NEET) PSA 14	Nov 06-Jan 07 3 mths average	4.8%	%	4.2%		4.0%		3.6%		Oxfordshire Children's Trust
* NI 152 (££) Working age people on out of work benefits PSA 8	Average of Aug 06 to May 07 DWP / NOMIS	Baseline gap to SE average 2.1 ppts						<i>By May 2011 (Q2) maintain a lead over the South East average rate of at least 2.1 percentage points'</i>		Learning and Skills Partnership
* NI 163 (&) Working age population qualified to at least Level 2 or higher PSA 2	2006 Calendar year	73.8%	%	2.2 percentage points increase on baseline 76.0%		3.7 percentage point increase on baseline 77.5%		5.2 percentage point increase on baseline 79.0%		Learning and Skills Partnership
* NI 164 (&) Working age population qualified to at least Level 3 or higher PSA 2	2006 Calendar year	57.0%	%	1.2 percentage points increase on baseline 58.2%		2.7 percentage point increase on baseline 59.7%		4.2 percentage point increase on baseline 61.2%		Learning and Skills Partnership

Indicator	Baseline Year	Baseline	Indicator is measured as:	2008 / 2009		2009 / 2010		2010 / 2011		Lead
* NI 20 (&) Assault with injury crime rate PSA 25	2008/09	5.80 rate per 1,000 population Baseline 2008/09	No.	Baseline year				5.49 rate per 1,000 population		Safer Communities Partnership
* NI 21 (&) Dealing with local concerns about anti-social behaviour and crime by the local council and police PSA 23	Oct 2008 survey	28.10%	%	Baseline year		n/a		28.1% plus the minimum change required to demonstrate a statistically significant improvement plus a further 3.4 percentage points improvement in addition to this minimum. See Annex C for definition		Safer Communities Partnership
* NI 32 Repeat incidents of domestic violence PSA 23	2008/09	35%	%	Baseline year		n/a		32%		Safer Communities Partnership
* NI 40 Drug users in effective treatment PSA 25	2007/08	1636 drug users in effective treatment	No.	1685 (equivalent to 3% increase on baseline)		1702 (equivalent to 4% increase on baseline)		1719 (equivalent to 5% increase on baseline)		Safer Communities Partnership
* NI 141 Number of vulnerable people achieving independent living CLG DSO	2007-08	55.9%	%	57.0%		60.0%		63.0%		Health and Well-being Partnership

Indicator	Baseline Year	Baseline	Indicator is measured as:	2008 / 2009		2009 / 2010		2010 / 2011		Lead
* NI 154 (££) Net additional homes provided PSA 20	Averages covering 2001/02 to 2006/07	0	No.		2293		1913 (4206 cumulative)		1817 (3 year total = 6023)	Spatial Planning and Infrastructure Partnership
* NI 155 (££) Number of affordable homes delivered (gross) PSA 20	Avg. of 04/05, 05/06 & 06/07	0	No.		786		735 (1521 cumulative)		747 (3 year total = 2268)	Spatial Planning and Infrastructure Partnership
* NI 156 Number of households living in Temporary Accommodation PSA 20	Q4 2004 (Calendar year)	1639 (Dec 07 = 818)	No.	698		577		526 March 2011		Spatial Planning and Infrastructure Partnership

Indicator	Baseline Year	Baseline	Indicator is measured as:	2008 / 2009		2009 / 2010		2010 / 2011		Lead
* NI 8 Adult participation in sport DCMS DSO	12 months to Oct 06	23.5%	%		25.5%		26.5%		27.5%	Health & Well-being Partnership
* NI 120 (&) All-age all cause mortality rate PSA 18	2005-07 3-yr rolling average	160.6 (a standard statistical measure where lower numbers imply improving performance)	No.		157.4		154.2		151	Health & Well-being Partnership
* NI 131 Delayed transfers of care (DTC) from hospitals DH DSO	2007/08	26.6 per 100K	No.	Estimated 102 avg per week	20.6 per 100k	Estimated 96 avg per week	19.3 per 100k	Estimated 84 avg per week	16.9 per 100k	Health & Well-being Partnership
* NI 135 Carers receiving needs assessment or review and a specific carer's service, or advice and information DH	2006/07	16.8%	%		18.5%		20.3%		22%	Health & Well-being Partnership

Indicator	Baseline Year	Baseline	Indicator is measured as:	2008 / 2009		2009 / 2010		2010 / 2011		Lead
* NI 175 (&) Access to services and facilities by public transport, walking and cycling DfT DSO	2007/08 Q4 outturn (taken Q1 08/09)	74.4%	%	76.10%		77.10%		78.10%		Spatial Planning and Infrastructure Partnership
* NI 198 Children travelling to school – mode of travel usually used.	2007/08	23.9%	%	(estimated 19,850) 22.7%		(estimated 19,000) 21.7%		(estimated 18,400) 21.0%		Spatial Planning and Infrastructure Partnership
* NI 185 (&) CO2 reduction from Local Authority operations PSA 27	2008/09 Financial year	93,206 tonnes	%	Baseline year		3%		6% reduction from baseline		Environment and Waste Partnership
* NI 188 Adapting to climate change PSA 27	2007/08	Level Zero	Level achieved between 0 and 4	Level 1		Level 2		Level 3		Environment and Waste Partnership
* NI 191 Residual household waste per household (hhd) Defra DSO	2007/08	727Kg	No.	725Kg		723 kg		715 kg		Environment and Waste Partnership

Indicator	Baseline Year	Baseline	Indicator is measured as:	2008 / 2009		2009 / 2010		2010 / 2011		Lead
* NI 192 Household waste recycled and composted Defra DSO	2006/07	38% (118,560 tonnes recycled)	%	(estimated 120,931 tonnes recycled)	40%	(estimated 123,349 tonnes recycled)	42%	(estimated 127,049 tonnes recycled)	45%	Environment and Waste Partnership
* NI 195 (&) Improved street and environmental cleanliness (levels of graffiti, litter, detritus and fly posting) Defra DSO	2006/07	6% (257 Litter Inspections falling below grade B)	%	(225)	5%	(180)	4%	(180)	4%	Environment and Waste Partnership
[Reward grant only payable against litter element]	2006/07	10%(450 Detritus Inspections falling below grade B)	%	(405)	9%	(360)	8%	(315)	7%	
* NI 196 (&) Improved street and environmental cleanliness – fly tipping Defra DSO	2007/08	“Effective” grading (6,344 incidents)	No.	“Effective” grading (6,154 incidents)	(3%)	“Effective” grading (5,969 incidents)	(6%)	“Effective” grading (5,730 incidents)	(10%)	Environment and Waste Partnership

Indicator	Baseline Year	Baseline	Indicator is measured as:	2008 / 2009		2009 / 2010		2010 / 2011		Lead
* NI 5 Overall/general satisfaction with local area CLG DSO	2008 Place survey	86.40%	%	Baseline year		n/a		87.50%		Oxfordshire Chief Executives/Officers Group
* NI 6 Participation in regular volunteering CO DSO	2008 Place survey	28.70%	%	Baseline year		n/a		30.40%		Oxfordshire Voluntary Sector Development Partnership
* NI 140 Fair Treatment by local Services	2008 Place survey	77.50%	%	Baseline year		n/a		79.10%		Oxfordshire Chief Executives/Officers Group
* NI 179 Value for money – total net value of on-going cash-releasing value for money gains that have impacted since the start of the 2008-9 financial year CLG DSO	2007/08	0	No.	(3.1% reduction from baseline) £15.75m savings from baseline		(6.3% reduction from baseline) £31.50m savings from baseline		(9.6% reduction from baseline) £47.25m savings from baseline		Oxfordshire Chief Executives/Officers Group

Statutory Educational Targets

Indicator	Baseline Year	Baseline	Indicator is measured as:	2008 / 2009		2009 / 2010		2010 / 2011		Lead
NI 72 Achievement of at least 78 points across the Early Years Foundation Stage with at least 6 in each of the scales in Personal Social and Emotional Development and Communication, Language and Literacy PSA 10	Ac year 2004/05	46.6%	%	2009 academic year targets	52.8%	2010 academic year targets	55.0%			Oxfordshire Children's Trust
NI 73 Achievement at level 4 or above in both English and Maths at Key Stage 2 (Threshold) PSA 10	Ac year 2007/08	72.7%	%	2009 academic year targets	79%	2010 academic year targets	79%			Oxfordshire Children's Trust
NI 75 Achievement of 5 or more A*-C grades at GCSE or equivalent including English and Maths (Threshold) PSA 10	Ac year 2007/08	50.5%	%	2009 academic year targets	58%	2010 academic year targets	60%			Oxfordshire Children's Trust
NI 87 Secondary school persistent absence rate DCSF DSO	Ac year 2006/07	5.5%	%	2009 academic year targets	5.30%	2010 academic year targets	5%			Oxfordshire Children's Trust

Indicator	Baseline Year	Baseline	Indicator is measured as:	2008 / 2009		2009 / 2010		2010 / 2011		Lead
NI 92 Narrowing the gap between the lowest achieving 20% in the Early Years Foundation Stage Profile and the rest	Ac Yr 2004/05 Ac Yr 2005/06: 38.4%	38.1%	%	2009 academic year targets	33.6%	2010 academic year targets	31%			Oxfordshire Children's Trust
NI 93 Progression by 2 levels in English between Key Stage 1 and Key Stage 2 PSA 11	Ac Yr 2007/08	85.0%	%	2009 academic year targets	89%	Provisional 2010 academic year targets	89%			Oxfordshire Children's Trust
NI 94 Progression by 2 levels in Maths between Key Stage 1 and Key Stage 2 PSA 11	Ac Yr 2007/08	81.0%	%	2009 academic year targets	85%	2010 academic year targets	87%			Oxfordshire Children's Trust
NI 99 Children in care reaching level 4 in English at Key Stage 2 PSA 11	Ac Yr 2006/07	9%	%	2009 academic year targets	31.0%	2010 academic year targets	46%			Oxfordshire Children's Trust
NI 100 Children in care reaching level 4 in Maths at Key Stage 2 PSA 11	Ac Yr 2006/07	18%	%	2009 academic year targets	38.0%	2010 academic year targets	54%			Oxfordshire Children's Trust

Indicator	Baseline Year	Baseline	Indicator is measured as:	2008 / 2009		2009 / 2010		2010 / 2011		Lead
NI 101 Children in care achieving 5 A*-C GCSEs (or equivalent) at Key Stage 4 (including English and Maths) PSA 11	Ac Yr 2006/07	7.9%	%	2009 academic year targets	22.0%	2010 academic year targets	16%			Oxfordshire Children's Trust

KEY

- * Denotes designated targets – i.e. reward grant attached to these targets
- ££ Denotes targets impacted by the economic downturn. Renegotiation of these targets has been deferred until late 2009/10
- & Denotes targets that have specific arrangements built into the negotiated baseline and target. For full details see Annex C.

ANNEX A: Oxfordshire Partnership (OP) – Membership Organisations

- Local Strategic Partnerships
 - Cherwell Community Planning Partnership
 - Oxford Strategic Partnership
 - South Oxfordshire Partnership
 - Vale Partnership
 - West Oxfordshire Strategic Partnership
- Oxfordshire Association of Local Councils
- Oxfordshire Rural Community Council
- Oxfordshire Community and Voluntary Action (P)
- Churches Together in Oxfordshire
- Oxford Inspires
- Oxfordshire Racial Equality Council
- Voluntary and Community Sector elected representatives
- Learning and Skills Council (P)
- South East England Development Agency (P)
- Government Office for the South East (P)
- Ministry of Defence
- Thames Valley Police (P)
- Oxfordshire Primary Care trust (P)
- Oxford University
- Oxford Brookes University
- Local Authorities
 - Cherwell District Council (P)
 - Oxford City Council (P)
 - Oxfordshire County Council (P)
 - South Oxfordshire District Council (P)
 - Vale of White Horse District Council (P)
 - West Oxfordshire District Council (P)
- Oxfordshire Economic Partnership
- Oxford Times (private sector)
- Value Retail (private sector)
- Oxfordshire Chamber of Commerce
- Oxford United FC (private sector)
- Oxfordshire Learning and Skills Partnership

(P) = Members of the Public Service Board

ANNEX B: Other organizations working to deliver LAA targets (those with duty to cooperate)

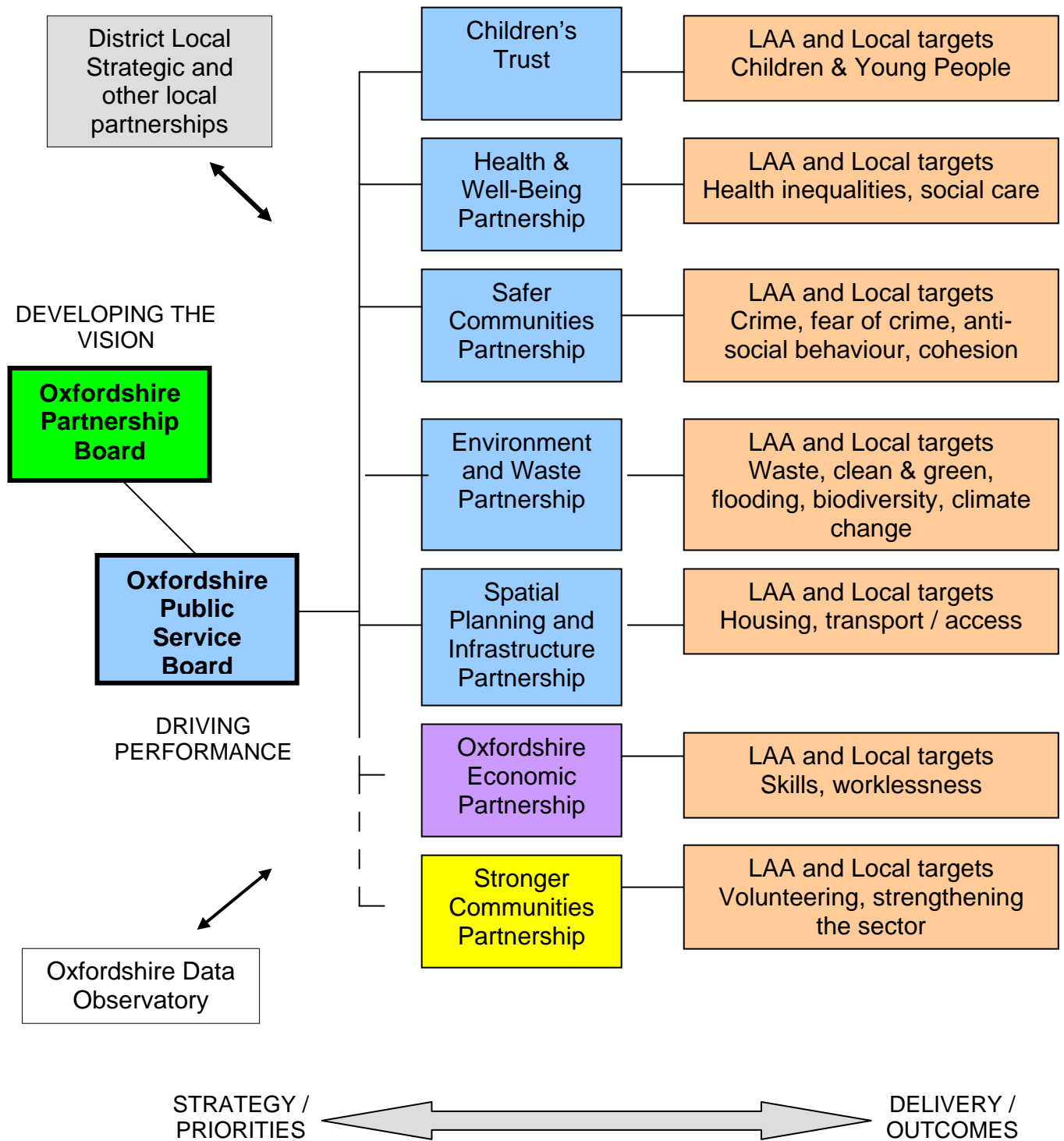
- Job Centre Plus (NI 152, 163, 164)
- Oxfordshire Sports Partnership (NI 8)
- Thames Valley Probation (NI 111) **POST SUBMISSION NOTE: TV Probation support this target but are not involved in its delivery**

ANNEX C: Arrangements for specific targets agreed during negotiations

<p>NI 20 Assault with injury crime rate</p>	<p>Baseline to be set July 2009 when 2008/09 figures available. Target is a reduction of AWLSI from a rate of y.yy crimes per 1,000 pop in 08/09 based on mid-2007 population estimates to a rate of a.aa crimes per 1,000 pop in 2010/11 based on mid-2009 pop estimates, equivalent to a reduction of 5.4% from baseline.</p>
<p>NI 21 Dealing with local concerns about anti-social behaviour and crime by the local council and police</p>	<p>Target is the result of the 2008 Place Based Survey (28.1%) plus the minimum change required to demonstrate a statistically significant improvement (calculated in accordance with the relevant departmental advice) plus a further 3.4 percentage points improvement in addition to this minimum. The final numerical value for the minimum statistically significant improvement for the 2010-11 target will be confirmed by the Home Office once data for the 2010 Place Survey are available.</p>
<p>NI 120 All-age all cause mortality rate</p>	<p>Target to reduce the gap in all-age, all-cause mortality between the 20% most deprived Super Output Areas in Oxfordshire and the 20% least deprived by 6% by the end of 2010-2011. The baseline is calculated from pooled data from 2005-07 death rates and SOAs are ranked by deprivation based on the Index of Multiple Deprivation 2007 scores. Final performance is calculated as 2009-11 pooled. 2011 data will not be available until 2012/13. If data is not available to meet the reward grant deadline in 2012 final performance will be based on 2009-10 pooled data</p>
<p>NI 152 Working age people on out of work benefits NI 154 Net additional homes provided NI 155 Number of affordable homes delivered (gross)</p>	<p>Targets affected by the economic downturn. Renegotiation deferred until later in 2009/10.</p>
<p>NI 163 Working age population qualified to at least Level 2 or higher NI 164 Working age population qualified to at least Level 3 or higher</p>	<ul style="list-style-type: none"> • The LAA first year target (that is 08/09) represents the cumulative percentage point increase between 2006 and 2009 calendar year - data for 2009 calendar year will be available Aug 2010. • The LAA second year target (that is 09/10) represents the cumulative percentage point increase between 2006 and 2010 calendar year - data for 2010 calendar year will be available Aug 2011. • The LAA final year target (that is 10/11) represents the cumulative percentage point increase between 2006 and 2011 calendar year - as mentioned above data will be available Aug 2012.

NI 175 Access to services and facilities by public transport, walking and cycling	Target is set based on the proportion of rural households in the county within 30 minutes travel of a town centre by public transport. 2007/08 baseline calculated as outturn in Q1 2008/09.
NI 185 Adapting to climate change	Baseline to be confirmed in August 2009 when data is available. Target agreed as 6% reduction on baseline level.
NI 195 Improved street and environmental cleanliness (levels of graffiti, litter, detritus and fly posting)	Target is focused on the litter and detritus elements of the national indicator. Reward grant is only payable on the litter element.
NI 196 Improved street and environmental cleanliness – fly tipping	Target focus is on reduction in the number of incidents

ANNEX D: Structure of Oxfordshire Partnership and thematic Partnerships



ANNEX E: Summary of 2010-11 targets agreed – March 2009 for Reward Model

In return for confirmed achievement in full of the targets identified below Communities and Local Government will pay the local authority a non-ring fenced grant by virtue of Section 31 of the Local Government Act 2003. Reward will be circulated by reference to the LAA *reward guidance: 2009*, published by Communities and Local Government.

Summary of data to be used to determine entitlement to Performance Reward Grant

1	2	3	4	5	6	7
Indicator number	Agreed LAA baseline	Final LAA target	Enter '1' if target is greater than or as same as baseline but a reduction in performance is required – see note 5	Enter '1' if target is less than or as same as baseline but an increase in performance is required – see note 6	Disaggregated weighting – see note 7 % if applicable	Notes
5	86.4%	87.5%				Place survey – Target agreed subject to final verified data is available
6	28.7%	30.4%				Place survey – Target agreed subject to final verified data is available
8	23.5%	27.5%				
20	08/09 Baseline	See notes				A reduction of AWLSI from a rate of y.yy crimes per 1,000 pop in 08/09 based on mid-2007 population estimates to a rate of a.aa crimes per 1,000 pop in 2010/11 based on mid-2009 pop estimates, equivalent to a reduction of 5.4% from baseline
21	28.1%	MSSI + 3.4%				Place survey – Target agreed subject to final verified data is available MSSI final value to be confirmed by Home Office once 2010 Place Survey data is available.
32	35%	32%				
40	1636	1719				
56	15.3%	15.2%				
62	13.9%	11.0%				Baseline is 07/08
70	107 per 10k of pop.	104 per 10k of pop.				Baseline is 07/08
81	A difference of 34 % points	A difference of 28% points				

110	71.7%	85%				
111	1420 per 100k population aged 10-17	1330 per 100k population aged 10-17				
112	13% reduction	45% reduction				Reduction from 1998 original baseline
117	4.8%	3.6%				
120	160.6	151.0				Baseline is defined as 2005-07 (pooled) Final target is defined as 2009/10 (pooled) if available otherwise 2009/10 (pooled).
131	26.6 per 100,000 population	16.9 per 100,000 population				Baseline is 07/08 data from week ending 20/5/2007 to year end
135	16.8%	22%				
140	77.5%	79.1%				Place survey – Target agreed subject to final verified data is available
141	55.9%	63.0%				Baseline is 07/08
152	5.9%	4.9%				Economic indicator – not locked down for reward
154	2551	9102 (cumulative)				Economic indicator – not locked down for reward
155	589	2537 (cumulative)				Economic indicator – not locked down for reward
156	1639	526				[Performance Dec 07 = 818]
163	73.8%	79.0%				Target is agreed as a percentage point improvement over baseline of +5.2%. Final target represents the cumulative percentage point increase between 2006 and 2011 calendar year
164	57.0%	61.2%				Target is agreed as a percentage point improvement over baseline of +4.2%. Final target represents the cumulative percentage point increase between 2006 and 2011 calendar year
175	74.4%	78.1%				Target is % of rural households with access to major centres. Baseline is Q4 07/08 outturn taken Q1 08/09
179	0	£47,250K (£47.25m)				Cumulative figure covering the three years of the LAA agreement.
185	08/09 baseline	6% reduction from baseline				08/09 baseline available Aug 09.
188	Level 0	Level 3				
191	727kgs per household	715kgs per household				Baseline 2007/08
192	38%	45%				
195	6%	4%				Reward focus will be Litter element.
196	Effective	Effective		1		
198	23.9%	21.0%				Baseline 2007/08 school

Notes (Annex E)

1. **Unknown baseline** – where the target is being agreed as a baseline plus or minus X improvement, enter the baseline dataset awaited in column 2 and the percentage (making clear whether this is a percentage or percentage point improvement) or numerical improvement agreed in the notes column.

2. **Target datasets** – unless otherwise stated it will be assumed that the figures in column 3 relate to the recommended datasets set out in annex D of the guidance. Where the indicator guidance allows a choice of datasets, it must be clear what has been used as the basis for the target (eg in some instances convergence targets to regional average comparators have been agreed).

3. **Units of measurement** – these must be the same for the baseline and target as set out in the technical description of the indicator or subsequent guidance. Occasionally a target comparing performance in the area to that of a larger (eg the region) has been agreed. In both instances the target and baseline must be recorded using the same units of measurement calculated using the same methodology. So for example, if the baseline is 56 per cent and the required level of improvement is agreed to be four percentage points the final LAA will be 60 per cent.

4. **Sample surveys** – where a level of improvement is agreed that requires only the *minimum possible* statistically significant improvement between the baseline and target surveys, record the baseline in column 2. Where it is not possible to enter a numerical value for the target, “MSSI” should be entered in column 3. The confidence level and interval achieved in reporting the baseline data should also be recorded in the notes column. Where the numerical target is not agreed GOs and areas must record in writing (in the notes) their shared understanding of what is required for the minimum statistically significant improvement to be demonstrated (or reference the relevant guidance). If this is not done it will be assumed that the minimum statistically significant improvement will be calculated by reference to specific guidance issued by the Department responsible for the indicator. If nothing is recorded or there is no guidance available it will be assumed that a standard definition of minimum statistically significant improvement applies. This is that the result from the second survey is beyond the confidence interval on the first survey, multiplied by the square root of two, (ie 1.44214) while taking account of the number of decimal places to which the data is reported.

5. **Column 4** – enter a ‘1’ if good performance would normally mean a reduction in the indicator. This will *only* be relevant where the number agreed as a *target is greater* than or the same as the number agreed for the baseline but good performance is agreed to be a reduction in the indicator.

6. **Column 5** – enter a ‘1’ if good performance would normally mean an increase in the indicator. This will *only* be relevant where the number agreed

as a *target is less* than or the same as the number agreed for the baseline but the highest number is what is ideally wanted.

7. **Column 6** – enter the weighting (as a percentage) riding upon a disaggregated sub-target. For each indicator used as the basis of a disaggregated target. The total weighting must add up to 100 per cent. This may happen where two or more targets are based upon the same indicator but measure only part of the area or local community or where the indicator has a number of disaggregated sub-targets at district level. Where this happens, a weighting must be agreed to reflect the particular local services. For example, if for one indicator there were two disaggregated targets, the indicator in column '1' will be the same, but two rows of the table will be used to show each sub-target, with the weighting for each in column 7. The part of the area or community to which each disaggregate target relates should be described explicitly in the notes column.

8. **Economic targets** – where an indicator is listed in annex C of the guidance, areas should indicate in the notes column if they do *not* intend to take advantage of the flexibility to revise the target in after March 2009, ie they wish to fix the target in 2009.